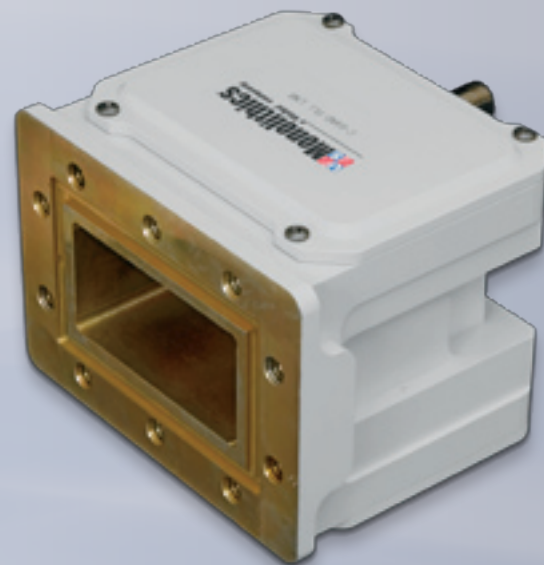


Wide range of standard C-band LNB's with Noise Figures from 0.4 – 1.1 dB



US Monolithics provides microwave products and a comprehensive, advanced technology approach to your high volume communication systems. We work directly with you to optimize quality, cost, and performance for your microwave products. We bring you a combination of top-level, high frequency microwave systems knowledge and the experience to develop cost-effective, highly integrated custom MMIC chip sets and assemblies. The result is a high quality product, designed for high volume manufacturability and the lowest possible cost.

The US Monolithics ODU group can provide all your standard satellite communications outdoor units. We carry a complete line of standard Ku-band and C-band products including solid state block-up converters with power levels to 10 Watts, low-noise block-down converters for all frequency bands, and a full range of antennas up to 2.4-meter diameters.

Our capabilities include:

- Design and manufacture of high volume satcom and terrestrial microwave products
- Optimization of quality, cost, and performance
- Assessment of top-level system design options and tradeoffs
- Development of highly integrated custom MMIC chip sets and assemblies
- Design assurance for high volume manufacturability and the lowest possible cost
- Diverse technical staff, including the corporate resources of ViaSat

FEATURES

Frequency Configurations

- Available in C-band and Ext C-band configurations
- 3.40 to 4.20 GHz (C-band) RF frequency
- 5.15 GHz local frequency
- 3.625 to 4.200 GHz (C-band) RF frequency
- 5.15 GHz (Ext) local frequency
- 4.50 to 4.80 GHz (C-band) RF frequency
- 5.76 GHz (Ext) local frequency

Availability

- LNB PLL Ext Ref
- LNB PLL Int Ref
- Stabilities ± 3 ppm to ± 10 ppm
- Noise Figure 0.4–0.8dB
- Available in N-type and F-type connectors

SPECIFICATIONS

PART NUMBER	PRODUCT DESCRIPTION							
	RF FREQUENCY	NOISE	LOCAL	STABILITY	IF FREQUENCY	GAIN	DC VOLTAGE	OUTPUT
C BAND PLL LNB EXT REF								
USLCPXF302	3.4 - 4.2 GHz	0.8 dB	5.15 GHz	DEPENDS ON EXT REF	950 - 1750 MHz	60 dB min	+13.5 to +24 VDC	F
USLCPXN302	3.4 - 4.2 GHz	0.8 dB	5.15 GHz	DEPENDS ON EXT REF	950 - 1750 MHz	59 dB min	+13.5 to +24 VDC	N
USLCPXF101	3.625 - 4.200 GHz	0.5 dB	5.15 GHz	DEPENDS ON EXT REF	950 - 1525 MHz	59 dB min	+13.5 to +24 VDC	F
USLCPXN101	3.625 - 4.200 GHz	0.5 dB	5.15 GHz	DEPENDS ON EXT REF	950 - 1525 MHz	59 dB min	+13.5 to +24 VDC	N
USLCPXF401	4.5 - 4.8 GHz	0.5 dB	5.76 GHz	DEPENDS ON EXT REF	960 - 1,260 MHz	59 dB min	+13.5 to +24 VDC	F
USLCPXF300	3.4 - 4.2 GHz	0.4 dB TYP	5.15 GHz	DEPENDS ON EXT REF	950 - 1750 MHz	60 dB MIN	+13.5 TO +24 VDC	F
KU BAND PLL LNB EXT REF								
USLCPIF332	3.4 - 4.2 GHz	0.8 dB	5.15 GHz	+/- 3PPM	950 - 1750 MHz	55 dB MIN	+13.5 TO +24 VDC	F
USLCPIN332	3.4 - 4.2 GHz	0.8 dB	5.15 GHz	+/- 3PPM	950 - 1,750 MHz	59 dB MIN	+13.5 TO +24 VDC	N
USLCPIF352	3.4 - 4.2 GHz	0.8 dB	5.15 GHz	+/- 10PPM	950 - 1750 MHz	59 dB MIN	+13.5 TO +24 VDC	F
USLCPIF131	3.625 - 4.200 GHz	0.5 dB	5.15 GHz	+/- 3PPM	950 - 1525 MHz	59 dB MIN	+13.5 TO +24 VDC	F
USLCPIN131	3.625 - 4.200 GHz	0.5 dB	5.15 GHz	+/- 3PPM	950 - 1525 MHz	60 dB MIN	+13.5 TO +24 VDC	N
USLCPIF131A	3.625 - 4.200 GHz	0.5 dB	5.15 GHz	+/- 3PPM	950 - 1525 MHz	59 dB MIN	+12 TO +24 VDC	F
USLCPIN131A	3.625 - 4.200 GHz	0.5 dB	5.15 GHz	+/- 3PPM	950 - 1525 MHz	59 dB MIN	+12 TO +24 VDC	N
USLCPIF151	3.625 - 4.200 GHz	0.5 dB	5.15 GHz	+/- 10PPM	950 - 1525 MHz	59 dB MIN	+12 TO +24 VDC	F
USLCPIF431	4.5 - 4.8 GHz	0.5 dB	5.76 GHz	+/- 3PPM	960 - 1,260 MHz	59 dB MIN	+13.5 TO +24 VDC	F
USLCPIF451	4.5 - 4.8 GHz	0.5 dB	5.76 GHz	+/- 10PPM	960 - 1,260 MHz	59 dB MIN	+13.5 TO +24 VDC	F
USLCPIF551	4.5 - 4.8 GHz	0.5 dB	5.95 GHz	+/- 10PPM	1150 - 1450 MHz	59 dB MIN	+13.5 TO +24 VDC	F
USLCPIN551	4.5 - 4.8 GHz	0.5 dB	5.95 GHz	+/- 10PPM	1150 - 1450 MHz	59 dB MIN	+13.5 TO +24 VDC	N

Note: All units have input waveguide CPR-229G

PART NUMBER GUIDE

Example To order C-Band LNB USLCPXF201:

USLCPXF201

Type	Freq Band	Source Type	Connector	IF Frequency		Stability		Noise Figure	
B - BUC	A - Ka	DO - DRO	F - F Type	0 - 950 - 1450 MHz	C - 950 - 1450 MHz,	0 - Ext Ref	A - ± 0.5MHz	0 - 0.2 dB 14	6 - 0.8 dB 59
L - LNB	B - Ku	PX - PLL Ext Ref	N - N Type	1 - 950 - 1525 MHz	LO 10.50 GHz	1 - ± 1ppm ± 5kHz	B - ± 0.9MHz	1 - 0.3 dB 21	7 - 0.9 dB 67
	C - C			2 - 950 - 1700 MHz	D - 950 - 1450 MHz,	2 - ± 2ppm ± 10kHz	C - ± 1.5MHz	2 - 0.4 dB 28	8 - 1.0 dB 75
	D - Ext Ku	PI - PLL Int		3 - 950 - 1750 MHz	LO 10.75 GHz	3 - ± 3ppm ± 15kHz		3 - 0.5 dB 35	9 - 1.1 dB 84
	E - Ext C	Ref		4 - 960 - 1260 MHz	E - 950 - 1450 MHz,	4 - ± 5ppm ± 25kHz		4 - 0.6 dB 43	A - 1.2 dB 92
				5 - 1150 - 1450 MHz	LO 11.25 GHz	5 - ± 10ppm ± 50kHz		5 - 0.7 dB 51	B - 1.3 dB 101
				A - 950 - 1700 MHz,	F - 950 - 1450 MHz,	6 - ± 0.5ppm Ku ± 5kHz			
				LO 10.00 GHz	LO 11.30 GHz	7 - ± 1ppm Ku ± 10kHz			
				B - 950 - 1450 MHz,		8 - ± 3ppm Ku ± 25kHz			
				LO 10.25 GHz		9 - ± 10ppm Ku ± 100kHz			

US Monolithics LLC
 ODU Sales
 6155 El Camino Real
 Carlsbad, CA 92009

Tel: 760.795.6422
 Email: odusales@usmonolithics.com
www.usmonolithics.com/odu

